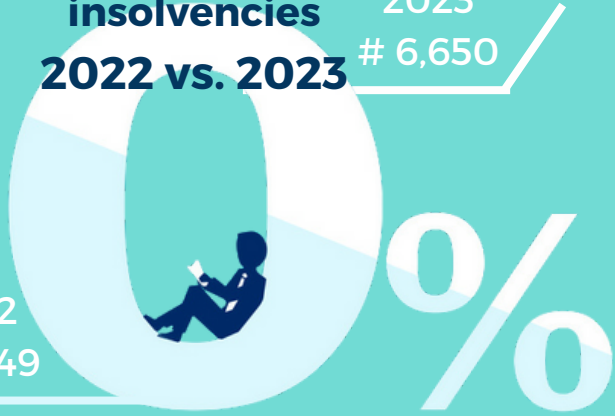


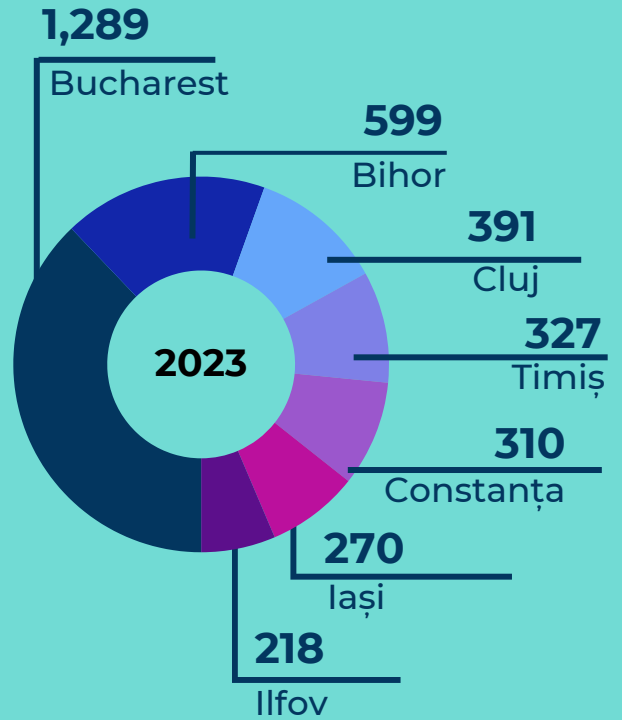
INSOLVENCIES SITUATION IN ROMANIA

2023

No. of insolvencies
2022 vs. 2023



TERRITORIAL DISTRIBUTION OF INSOLVENCIES



TOP 3 SECTORS no. of insolvencies

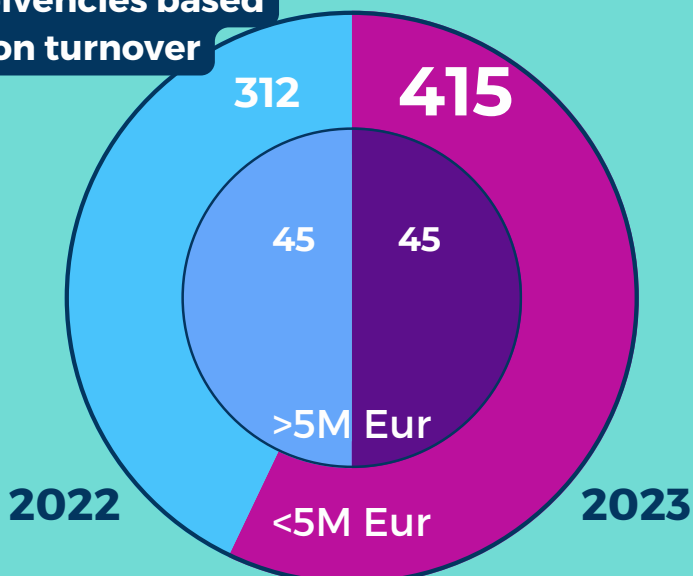


Evolution of companies

Total deregistration: 2022 – 73,639
2023 – 71,241

Total registrations: 2022 – 152,809
2023 – 147,026

Insolvencies based on turnover



56%

of the insolvent companies in 2023 were companies registered

before 2016